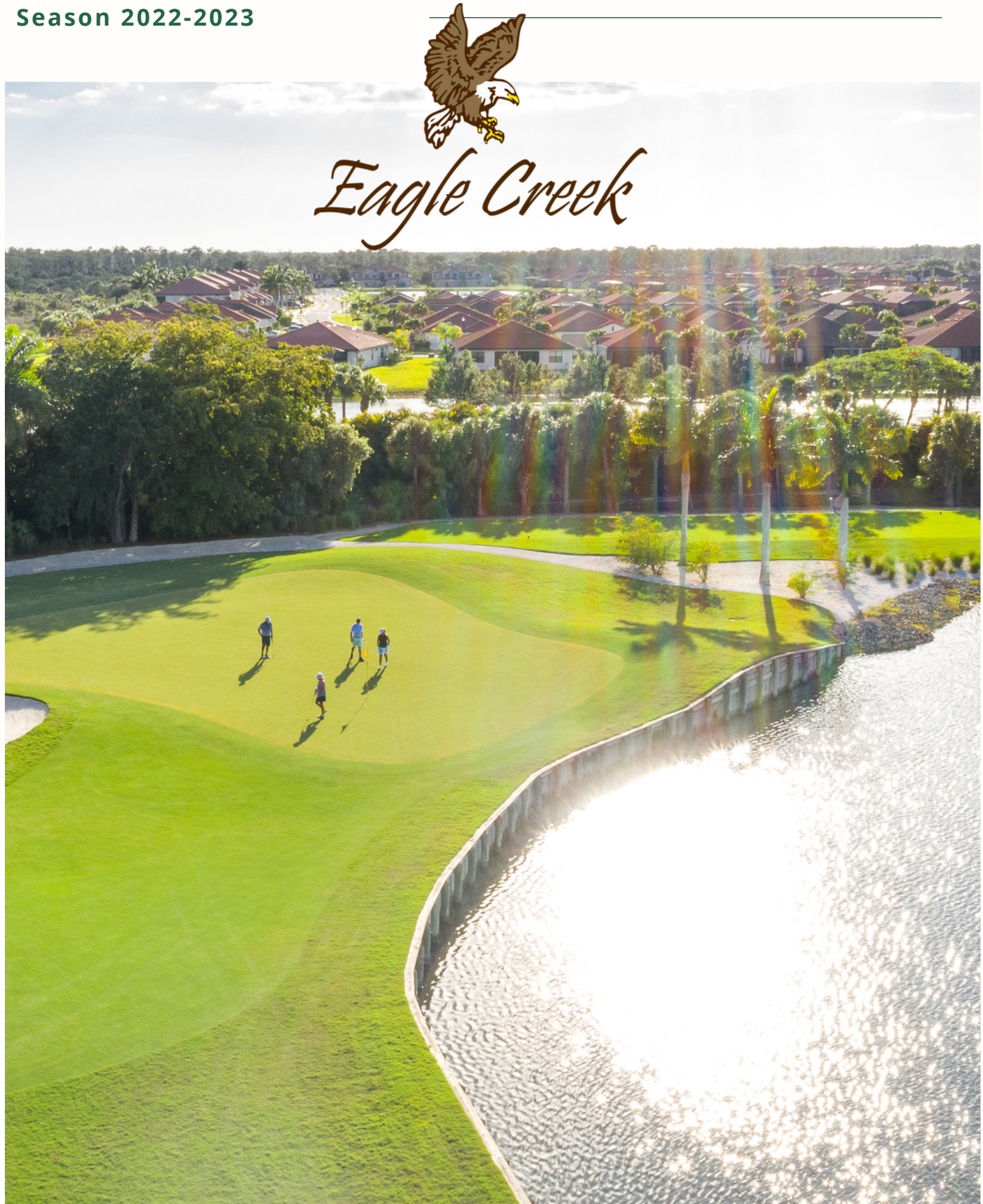


MEMBERSHIP OPPORTUNITIES

Season 2022-2023



Eagle Creek

WELCOME

THANK YOU FOR YOUR INTEREST IN EAGLE CREEK GOLF & COUNTRY CLUB!

Eagle Creek Golf and Country Club is a private community located on 300 acres of natural beauty in Naples. With just 460 total residences and all the amenities of a much larger community, it is unique in what it offers to homeowners and members.

Located just minutes from Route I-75, Downtown Naples and Marco Island, the community boasts an 18-hole Championship Golf Course and a Tennis and Sports Complex featuring 7 Har-Tru Tennis Courts as well as grass Bocce Courts, a Junior Olympic sized pool with men's and women's locker rooms, Tennis Pro Shop and Fitness Center that offers classes in aerobics, water aerobics, yoga and more.

The Clubhouse features a number of dining options from casual meals to fine dining in the Club's restaurant, The Grille Room. There is also a casual dining option at the Crystal Lake Café located poolside which was renovated in 2016.

Eagle Creek Golf Course has repeatedly won local and national awards for the beauty and maintenance of its grounds and common areas. We are a proud Audubon Cooperative Sanctuary, using an organic first approach on our golf course and featuring numerous bird boxes and osprey nests.

We are a philanthropic community, continually giving back to the Shelter for Abused Women & Children and Manatee Middle School and Elementary School. Our annual "Bikes for Tikes Tennis" event collects and delivers bikes for children in need around the holiday season.





INTRODUCTION

Four years in a row (2018-2022) Gulfshore Life magazine readers ranked Eagle Creek top three in Naples' for Best Tennis Facility & Golf Course. In 2020 we were recognized as The Best Golf Course & Tennis Facility in Naples! The only Naples' club recognized in both categories!

In 2019 & 2020 Florida Trend's Magazine named Eagle Creek as one of the "Best Places to Work in Florida". We are the first and only country club to appear on the Florida Trend Magazine list.

In April of 2022, Eagle Creek hosted the Florida Women's Senior Amateur Championship. In October 2020, Eagle Creek hosted the Florida State Golf Association's 59th Senior Amateur Championship! Notably in 2019, Eagle Creek hosted the only local U.S. Open Qualifier for Pebble Beach!

In addition, the club was chosen by world-renown painter Graeme Baxter to unveil his rendition of our famous finishing hole #18. It is proudly on display in the clubhouse. He was the official Ryder Cup artist for over 20 years and painted Prince William & Harry Spring of 2019. In 2010, Eagle Creek was the site of a Puma Commercial featuring Rickie Fowler.



MISSION STATEMENT

Eagle Creek Golf & Country Club is dedicated to providing enjoyment to our members and their guests – in our intimate gated residential community – by offering first rate facilities and high-quality services in a fiscally responsible manner.

EAGLE CREEK IS A MEMBER OWNED, MANDATORY MEMBERSHIP CLUB

** Eagle Creek homeowners are required to have either a Golf Equity Membership or a Social Equity Membership. A waitlist has commenced for Non-Resident Golf Equity Memberships.

CONNECT WITH US!

Website: www.JoinEagleCreek.com

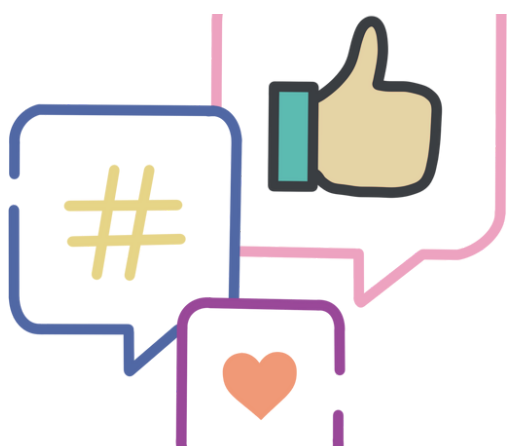
Follow us on the following Social Media Platforms:

Facebook: @EagleCreekGolfCC

Twitter: @EagleCreekGCC

Instagram: Eaglecreekgcc

YouTube: Eagle Creek Golf & Country Club



Social Equity Membership

Eagle Creek has wonderful amenities for resident social equity members! As a social member, you will be granted access and use of the following:

- Online & Mobile App Dining & Social Event Reservation System
- Clubhouse Grille Room
- Crystal Lake Café
- Tennis & Sports Complex
- 7 Har-Tru Tennis Courts
- Tennis Pro Shop
- Tennis Classes & Clinics
- Junior Olympic Sized Pool
- 3 Grass Bocce Courts
- All Social Events
- Full Voting Rights
- Eagle Creek Golfing Privileges May 1st – November 30th
- Social Members have year-round usage of all golf practice facilities
- Reciprocal Dining Program at participating local clubs May 1st – October 31st
- Full Gym with modern cardio equipment
- Fitness Classes in Season (included in your dues)
- Massage Therapy & Spa Services (per member charge)



Resident Social Equity Membership Fees:

- \$40,000 one-time initiation fee, with \$100 refundable equity
- Social Membership Dues \$8,276.00+ tax per year billed quarterly
- Social Membership Capital Fee \$2,185.00 per year billed quarterly

*Food and beverage minimum: \$1,200.00 year for couple, \$600 year for single

Resident & Non-Resident Golf Membership

Being an Eagle Creek golf member provides you with access to one of Naples' premier golf courses year-round! Voted Best in 2022 by the Readers of Gulfshore Life Magazine! Golf Equity Members have access to use all Eagle Creek facilities:

- 18 hole, Par 72 Championship Golf Course
- Golf Pro Shop
- Walk the Golf Course at any time
- Men's / Ladies' Locker Rooms
- Online & Mobile App Tee-Time Reservation System
- Ability to play in all special golf events including Club Championships
- Reciprocal Golf & Dining at participating local clubs May 1 – October 31
- Online Dining & Social Event Reservation System
- Clubhouse Grille Room
- Crystal Lake Café
- Tennis Pro Shop & Sports Complex
- 7 Har-Tru Tennis Courts
- Tennis Classes & Clinics
- Junior Olympic Sized Pool
- 3 Grass Bocce Courts
- All Social Events
- Full Voting Rights
- Full Gym with modern cardio equipment
- Fitness Classes in Season (included in your dues)
- Massage Therapy & Spa Services (per member charge)



The goal for the number of golf memberships is 360 ensuring that members have access to the golf course as often as they wish.

Golf Equity Membership Fees

- \$85,000 one-time initiation fee, with \$100 refundable equity
- Golf Membership Dues \$12,600.00+ tax per year billed quarterly
- Golf Membership Capital Fee \$2,500.00 per year billed quarterly
- Food and Beverage minimum of \$1,200.00 per year couple / \$600 single

- Hole in one club:

All golf members are automatically signed up for Hole in One Club (HIO). When a member in the “HIO” Club gets a Hole in One, all “HIO Club” members are charged \$5.00 and those “HIO” members that played golf on the day of the “HIO” receive a free drink voucher. The drinks are deducted from the winnings and the remainder of money is credited to the winners account.



Golf Schedule of Fees

Golf – Members

Full Locker \$222.00+ sales tax

Half Locker \$111.00+ sales tax

Single Bag Storage \$100.00+ sales tax

Cart Rental 18 \$29.00+ sales tax

Cart Rental 9 \$20.00+ sales tax

18 Hole Walking/Manual Push Cart \$23.00+ sales tax

9 Hole Walking / Manual Push Cart \$14.00+ sales tax

18 Hole Electric Push Cart \$29.00+ sales tax

9 Hole Electric Push Cart \$20.00+sales tax

**Walking after 4pm during season with your own walking cart, no charge

**Walking after 2pm off season with your own walking cart, no charge



Golf Schedule of Fees

Golf - In Season Guest	Green Fee	Cart Fee
Family Guest 18 Hole	\$65.00+ sales tax	\$29.00+ sales tax
Family Guest 9 Hole	\$50.00+ sales tax	\$20.00+ sales tax
Guest 18 Hole	\$125.00+ sales tax	\$29.00+ sales tax
Guest 9 Hole	\$70.00+ sales tax	\$20.00+ sales tax
After 1:00 PM 18 holes-	\$95.00 +sales tax	18 holes - \$29.00 +sales tax
After 1:00 PM 9 holes -	\$65.00 +sales tax	9 holes - \$20.00 +sales tax



Golf - Off Season Guest	Green Fee	Cart Fee
Family Guest 18 Hole	\$45.00 plus sales tax	\$29.00 plus sales tax
Family Guest 9 Hole	\$35.00 plus sales tax	\$20.00 plus sales tax
Guest 18 Hole	\$85.00 plus sales tax	\$29.00 plus sales tax
Guest 9 Hole	\$60.00 plus sales tax	\$20.00 plus sales tax
Walking Fee	\$23.00 +tax 18 holes	9 Holes \$14.00+tax
Social Golf Privilege	\$ NA	\$29.00 plus sales tax
Recip Fee 18 Hole	\$ NA	\$46.00 plus sales tax
Recip Fee 9 Hole	\$ NA	\$36.00 plus sales tax

Tennis & Sports Complex Fees



Men's and Ladies Day Round Robin \$5 per player

Ball Machine Daily \$20 (1 hour rental)

Ball Machine Annual Pass \$150 (Unlimited usage for a year from purchase)

Non-Member Instructional Court Fee \$5 (Added to the Instructional rates, credit card)

Fitness Class Guest \$10 (1 hour class)

Bocce League Fee \$10 (Covers league expenses)

Tennis Guest Fee* \$15 per guest (November 1-April 30)

Tennis Guest Fee* (Off Season) \$5 per guest (May 1 - October 31)

* All Tennis guest fees are billed to the host member's account. Immediate family members are exempt. There is no charge for open court time between members. Reservations may be made up to seven days in advance on ForeTees and should be in the system by at least 5:00 pm the night before.
(otherwise please contact the Tennis Pro Shop)

Members with guests may not be able to reserve before 11am & until 48 hours in advance at certain times. Ball Machine usage also may not be available during certain busy times in the daily schedule.

Members who participate on an Eagle Creek League tennis team will incur a \$20 fee per team per league season and will be billed to the members account. Non-members will incur a \$40 team fee per team per league season and will be paid by credit card in the tennis pro shop. All other league fees are payable to the respective League (USTA, CTA, Ultimate Tennis, etc.). Team members may participate in matches at team practices without court time fees. Guest fees and Non-Member instructional fees do however apply to all instruction and play as a guest of a member outside team practices.

Member Tennis Instruction Rates



EAGLE CREEK OPEN & TEAM TENNIS CLINICS

1 HOUR \$20 each
1 ½ HOURS \$30 each
2 HOURS \$40 each

Open and Team Clinics are on-going weekly clinics. Open clinics are offered to all members. Team clinics are available to each team. These clinics remain in the weekly schedule as long as interest supports an average of 4+ players per clinic. These clinics are a great way to meet new players (Open Clinics), practice with teammates (Team Clinics) and share in a social aspect while learning the game.

Open & Team Clinic Rates are same for Director and Assistant Pro.

Instructional prices set prior to 1/2020.

EAGLE CREEK PRIVATE INDIVIDUAL AND GROUP TENNIS LESSONS

1 PERSON PRIVATE LESSON

Tennis Director 1/2 Hour \$40, 1 Hour \$75, 1 1/2 Hour \$110
Assistant Pro: 1/2 Hour \$35, 1 Hour \$60, 1 1/2 Hour \$85

Private lessons are one on one individualized instruction. Lessons are arranged with the tennis staff to meet the specific needs and schedule of those requesting the lessons. These are a great way to use one on one time to build skills and make breakthroughs in your game.

2 PERSON SEMI PRIVATE GROUP

Tennis Director: 1 hour \$40 each 1 1/2 Hour \$60 each, 2 Hours \$80 Each
Assistant Pro: 1 hour \$35 each 1 ½ Hour \$55, 2 Hours \$80

3 PERSON PRIVATE GROUP

Tennis Director: 1 hour \$30 each, 1 1/2 hour \$40 each, 2 hours \$50
Assistant Pro: 1 hour \$25 each, 1 1/2 hour \$35 each, 2 hours \$50 each

4+ PERSON PRIVATE GROUP

Tennis Director: 1 hour \$25 each, 1 1/2 \$35 each, 2 hours \$45
Assistant Pro: 1 hour \$25, 1 1/2 \$35 each, 2 hours \$45

Private group lessons are arranged with the tennis staff to fit a closed group of players. They are customized and scheduled to meet the individual needs and times of the group requesting the instruction. These sessions may or may not be reoccurring. The per person price is determined by the number of people in the group. *Non-Member Instruction: A \$5 Court Usage Fee is added to all instructional rates for Non-Members

Refresh Project 2023

Starting April 2023, Eagle Creek will start construction on an exciting new Clubhouse refresh project! Featuring an indoor/outdoor bar with retractable doors, firepits overlooking the putting green and a covered verandah. Dining rooms will reflect modern elegance and the open-air bar will offer a comfortable experience to meet with members & friends while watching the game.

