

# VERANDA

2 Bedrooms | 2 Baths | Den | 1-Car Garage



**12-Unit Building**



**16-Unit Building**



# BROMELIA II

2 Bedrooms | 2 Baths | Den | 1-Car Garage

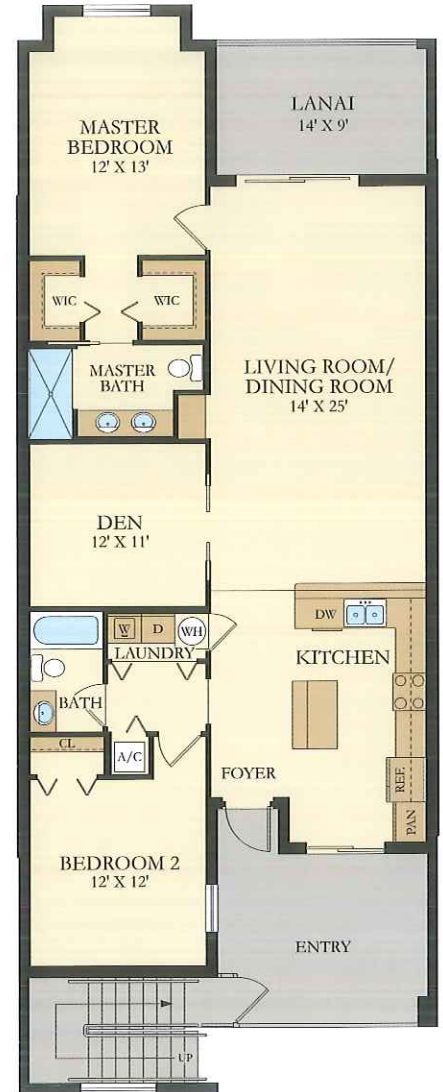
## First Floor Unit



FIRST FLOOR

1,355 Sq. Ft. Living A/C  
190 Sq. Ft. Entry  
123 Sq. Ft. Lanai  
**1,668 Sq. Ft. Total**

## Second Floor Unit



SECOND FLOOR

**LENNAR**



**THE NATIONAL**  
GOLF & COUNTRY CLUB  
AT AVE MARIA, FLORIDA

**ORAL REPRESENTATIONS CANNOT BE RELIED UPON AS CORRECTLY STATING REPRESENTATIONS OF THE DEVELOPER. FOR CORRECT REPRESENTATIONS, MAKE REFERENCE TO THIS BROCHURE AND TO THE DOCUMENTS REQUIRED BY SECTION 718.503, FLORIDA STATUTES, TO BE FURNISHED BY A DEVELOPER TO A BUYER OR LESSEE.**

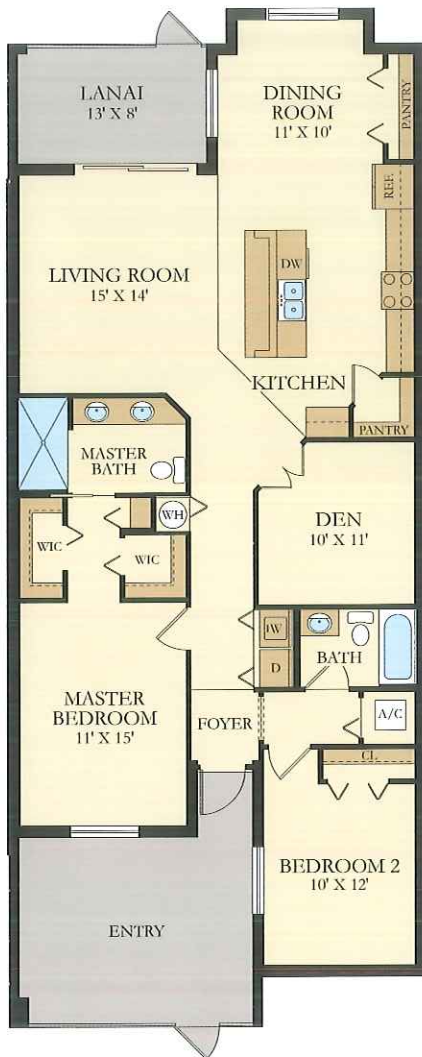
Please see your New Home Consultant and/or home purchase agreement for actual features designated as an Everything's Included feature. Features, amenities, floor plans, elevations, and designs vary and are subject to changes or substitution without notice. Items shown are artist's renderings and may contain options that are not standard on all models or not included in the purchase price. Availability may vary. Sq. ft./acreage/dimensions is estimated; actual sq. ft./acreage/dimensions will differ. Garage/bay sizes may vary from home to home and may not accommodate all vehicles. This is not an offer in states where prior registration is required. Void where prohibited by law. Copyright © 2020 Lennar Corporation, Lennar, the Lennar logo, WCI, the WCI logo, Everything's Included and the Everything's Included logo are U.S. registered service marks or service marks of Lennar Corporation and/or its subsidiaries. LENNAR HOMES LLC CBC038894 and CGC1523282. LENNAR REALTY INC (CQ1013633) 01/20.



# DIANGELO II

2 Bedrooms | 2 Baths | Den | 1-Car Garage

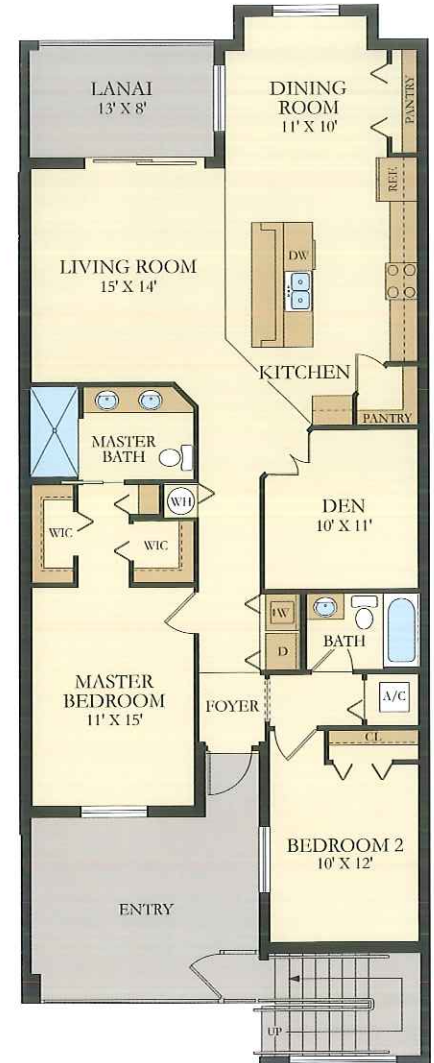
## First Floor Unit



FIRST FLOOR

1,366 Sq. Ft. Living A/C  
213 Sq. Ft. Entry  
101 Sq. Ft. Lanai  
**1,680 Sq. Ft. Total**

## Second Floor Unit



SECOND FLOOR

**LENNAR**



**THE NATIONAL**  
GOLF & COUNTRY CLUB  
AT AVE MARIA, FLORIDA

**ORAL REPRESENTATIONS CANNOT BE RELIED UPON AS CORRECTLY STATING REPRESENTATIONS OF THE DEVELOPER. FOR CORRECT REPRESENTATIONS, MAKE REFERENCE TO THIS BROCHURE AND TO THE DOCUMENTS REQUIRED BY SECTION 718.503, FLORIDA STATUTES, TO BE FURNISHED BY A DEVELOPER TO A BUYER OR LESSEE.**

Please see your New Home Consultant and/or home purchase agreement for actual features designated as an Everything's Included feature. Features, amenities, floor plans, elevations, and designs vary and are subject to changes or substitution without notice. Items shown are artist's renderings and may contain options that are not standard on all models or not included in the purchase price. Availability may vary. Sq. ft./acreage/dimensions is estimated; actual sq. ft./acreage/dimensions will differ. Garage/bay sizes may vary from home to home and may not accommodate all vehicles. This is not an offer in states where prior registration is required. Void where prohibited by law. Copyright © 2020 Lennar Corporation, Lennar, the Lennar logo, WCI, the WCI logo, Everything's Included and the Everything's Included logo are U.S. registered service marks or service marks of Lennar Corporation and/or its subsidiaries. LENNAR HOMES LLC CBC038894 and CGC1523282. LENNAR REALTY INC (CQ1013633) 01/20.





# ARABELLA II

2 Bedrooms | 2 Baths | Den | 1-Car Garage

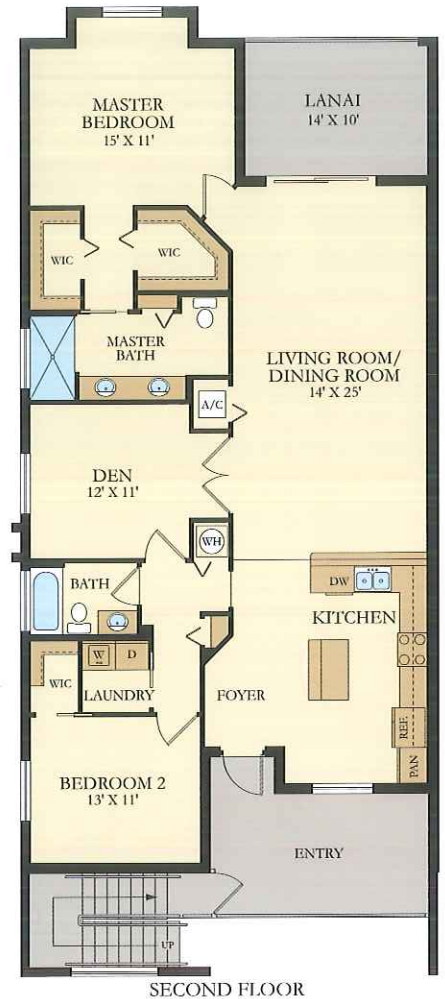
## First Floor Unit



1,569 Sq. Ft. Living A/C  
178 Sq. Ft. Entry  
139 Sq. Ft. Lanai

**1,886 Sq. Ft. Total**

## Second Floor Unit



**LENNAR**



**THE NATIONAL**  
GOLF & COUNTRY CLUB  
AT AVE MARIA, FLORIDA

**ORAL REPRESENTATIONS CANNOT BE RELIED UPON AS CORRECTLY STATING REPRESENTATIONS OF THE DEVELOPER. FOR CORRECT REPRESENTATIONS, MAKE REFERENCE TO THIS BROCHURE AND TO THE DOCUMENTS REQUIRED BY SECTION 718.503, FLORIDA STATUTES, TO BE FURNISHED BY A DEVELOPER TO A BUYER OR LESSEE.**

Please see your New Home Consultant and/or home purchase agreement for actual features designated as an Everything's Included feature. Features, amenities, floor plans, elevations, and designs vary and are subject to changes or substitution without notice. Items shown are artist's renderings and may contain options that are not standard on all models or not included in the purchase price. Availability may vary. Sq. ft./acreage/dimensions is estimated; actual sq. ft./acreage/dimensions will differ. Garage/bay sizes may vary from home to home and may not accommodate all vehicles. This is not an offer in states where prior registration is required. Void where prohibited by law. Copyright © 2020 Lennar Corporation. Lennar, the Lennar logo, WCI, the WCI logo, Everything's Included and the Everything's Included logo are U.S. registered service marks or service marks of Lennar Corporation and/or its subsidiaries. LENNAR HOMES LLC CBC038894 and CGC1523282. LENNAR REALTY INC (CQ1013633) 01/20.



### CONSTRUCTION FEATURES

- Steel reinforced concrete block construction
- Concrete and block have green additives in the mixture
- Professionally engineered roof trusses with hurricane tie-downs for wind protection
- Steel-frame interior wall construction
- Green termite prevention
- Hurricane impact sliding glass doors and windows

### EXTERIOR DESIGN FEATURES

- Sherwin Williams® paint
- Landscape designs are eco-friendly
- Automatic in-ground irrigation system
- Designer exterior lighting
- Screens on all operable windows
- Gutter system (per plan)
- Opener on all garage doors
- Steel reinforced garage door
- Garage door keypad for easy access
- Concrete roof tile
- Brick paver driveway and entryway
- Epoxy garage floor finish
- Aluminum screen construction

### INTERIOR DESIGN FEATURES

- 1/2" inch interior drywall
- Sherwin Williams® low volatile organic compounds (VOC) interior paint
- Washer and dryer
- Solid surface window sills
- 2" designer window blinds
- Low volatile organic compounds (VOC) carpet
- HVAC system customized to plan and homesite (right size for heating/cooling)
- Raised panel interior doors
- Designer tile in all wet areas
- Vinyl-coated shelving in closet and pantry

### ENERGY SAVING FEATURES

- Quick recovery energy-efficient hot water heaters
- Programmable thermostats
- Energy saving insulation in walls and ceiling
- R-4.1 perforated Fi-Foil radiant barrier on exterior walls
- Roof products offer LEED® points

### ELECTRICAL APPOINTMENTS

- LED lighting (per plan)
- Smoke and carbon monoxide detectors throughout home
- Cable outlets in all bedrooms, den and family room
- Lighting in all walk-in closets
- One hot electrical outlet with switch in all bedrooms
- Pre-wired for fan or light fixture in all bedrooms, den and living room
- Wi-Fi CERTIFIED™ Home - See brochure for additional features
- Electric automobile charging port in garage

### LUXURY KITCHEN FEATURES

- In-sink food disposal system
- Designer faucet
- Stainless steel undermount kitchen sink
- Designer cabinet hardware
- Complete GE® stainless steel appliance package Including:
  - Dishwasher
  - Over-the-range microwave
  - Smooth cooktop range
  - Side-by-side refrigerator
- 4" counter backsplash
- Granite countertops

### ELEGANT BATHROOM FEATURES

- Elongated commodes in all water closets
- Designer shower wall tile
- Clear glass enclosure in master bath
- Designer plumbing fixtures and accessories
- Designer lighting in all bathrooms
- Faucets and showerheads certified to meet EPA WaterSense® criteria
- Backsplash on all bathroom countertops
- Tile shower floor (per plan)
- Granite vanity tops

**LENNAR®**

*Everything's Included®, and every room's connected.*



EVERYTHING'S  
INCLUDED®

