

VICTORIA

2 Bedrooms | 2 Baths + Pool Bath | Den | 2-Car Courtyard Garage



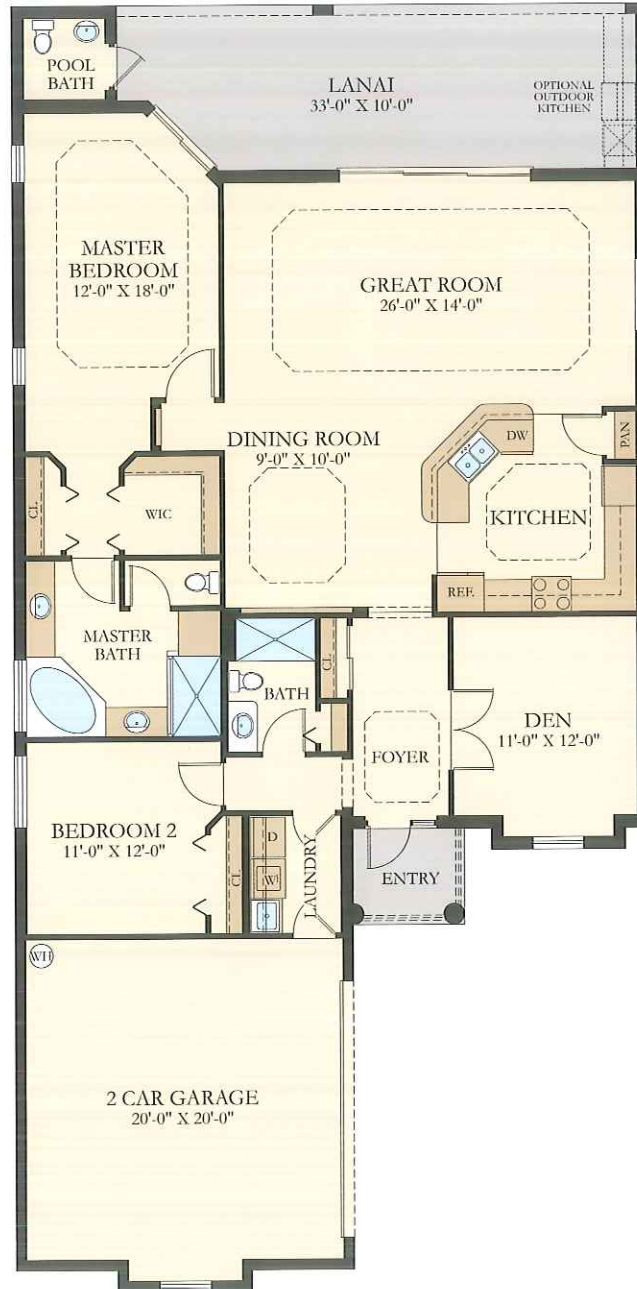
ELEVATION D



ELEVATION E

VICTORIA

2 Bedrooms | 2 Baths + Pool Bath | Den | 2-Car Courtyard Garage



1,850 Sq. Ft. Living A/C
 42 Sq. Ft. Entry
 365 Sq. Ft. Lanai
 452 Sq. Ft. Garage

2,709 Sq. Ft. Total

LENNAR®



THE NATIONAL
 GOLF & COUNTRY CLUB
 AT AVE MARIA, FLORIDA

Please see your New Home Consultant and/or home purchase agreement for actual features designated as an Everything's Included feature. Features, amenities, floor plans, elevations, and designs vary and are subject to changes or substitution without notice. Items shown are artist's renderings and may contain options that are not standard on all models or not included in the purchase price. Availability may vary. Sq. ft./acreage/dimensions is estimated; actual sq. ft./acreage/dimensions will differ. Garage/bay sizes may vary from home to home and may not accommodate all vehicles. This is not an offer in states where prior registration is required. Void where prohibited by law. Copyright © 2020 Lennar Corporation, Lennar, the Lennar logo, WCI, the WCI logo, Everything's Included and the Everything's Included logo are U.S. registered service marks or service marks of Lennar Corporation and/or its subsidiaries. LENNAR HOMES LLC CBC038894 and CGC1523262. LENNAR REALTY INC (CQ1013633) 01/20.



ANGELINA

2 Bedrooms | 2 Baths | Den | 2-Car Garage



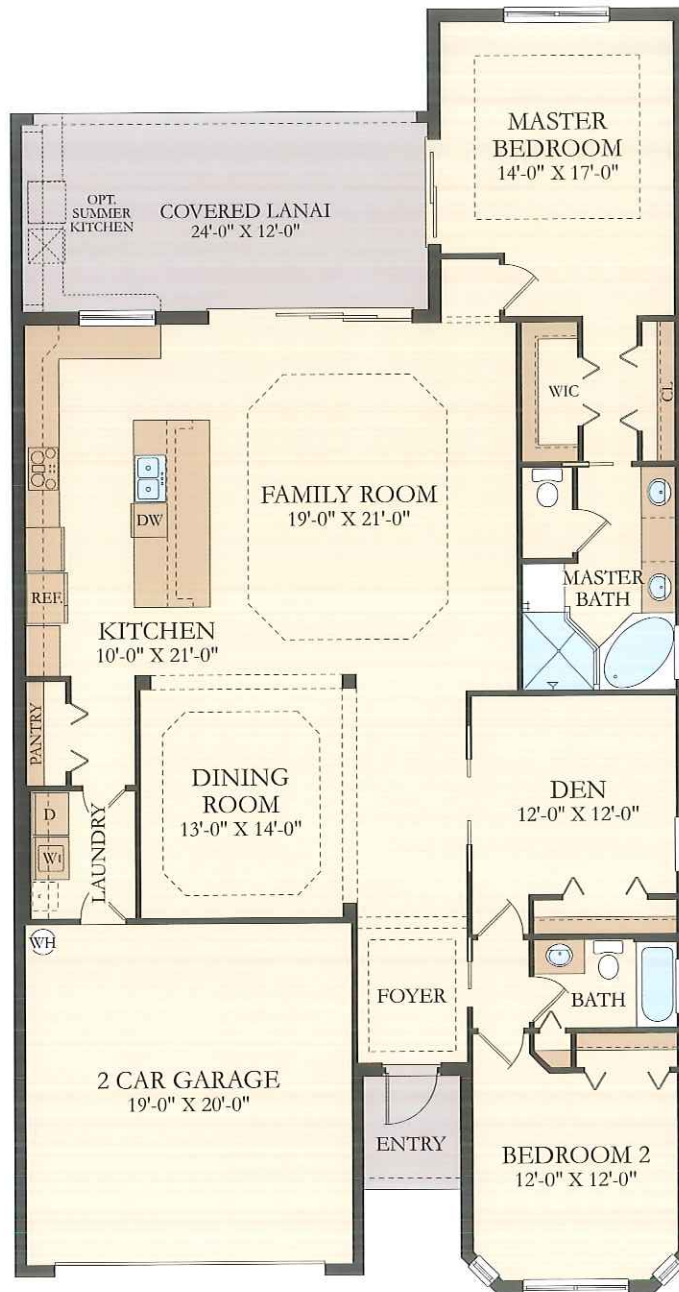
ELEVATION D



ELEVATION E

ANGELINA

2 Bedrooms | 2 Baths | Den | 2-Car Garage



2,061 Sq. Ft. Living A/C
 38 Sq. Ft. Entry
 289 Sq. Ft. Lanai
 421 Sq. Ft. Garage

2,809 Sq. Ft. Total

LENNAR®



THE NATIONAL
 GOLF & COUNTRY CLUB
 AT AVE MARIA, FLORIDA

Please see your New Home Consultant and/or home purchase agreement for actual features designated as an Everything's Included feature. Features, amenities, floor plans, elevations, and designs vary and are subject to changes or substitution without notice. Items shown are artist's renderings and may contain options that are not standard on all models or not included in the purchase price. Availability may vary. Sq. ft./acreage/dimensions is estimated; actual sq. ft./acreage/dimensions will differ. Garage/bay sizes may vary from home to home and may not accommodate all vehicles. This is not an offer in states where prior registration is required. Void where prohibited by law. Copyright © 2020 Lennar Corporation, Lennar, the Lennar logo, WCI, the WCI logo, Everything's Included and the Everything's Included logo are U.S. registered service marks or service marks of Lennar Corporation and/or its subsidiaries. LENNAR HOMES LLC CBC038894 and CGC1523282. LENNAR REALTY INC (CQ1013633) 01/20.



ISABELLA

3 Bedrooms | 2 Baths | Den | 2-Car Garage



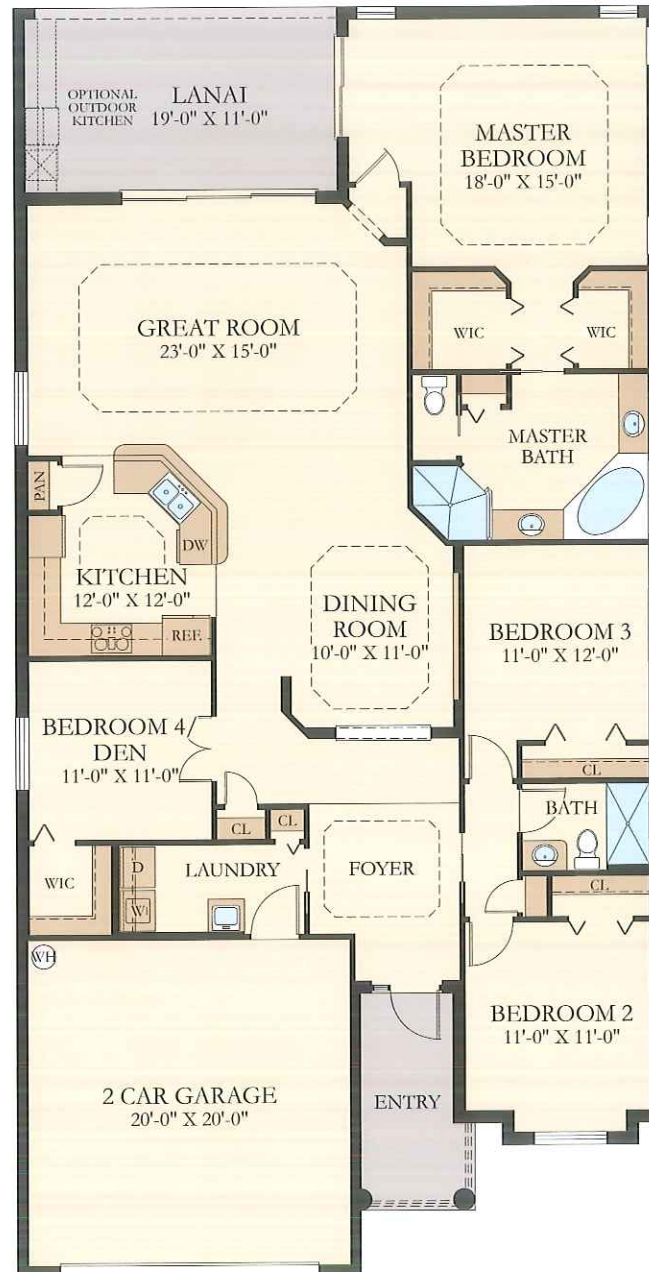
ELEVATION D



ELEVATION E

ISABELLA

3 Bedrooms | 2 Baths | Den | 2-Car Garage



2,246 Sq. Ft. Living A/C
83 Sq. Ft. Entry
227 Sq. Ft. Lanai
439 Sq. Ft. Garage

2,995 Sq. Ft. Total

LENNAR®



THE NATIONAL
GOLF & COUNTRY CLUB
AT AVE MARIA, FLORIDA

Please see your New Home Consultant and/or home purchase agreement for actual features designated as an Everything's Included feature. Features, amenities, floor plans, elevations, and designs vary and are subject to changes or substitution without notice. Items shown are artist's renderings and may contain options that are not standard on all models or not included in the purchase price. Availability may vary. Sq. ft./acreage/dimensions is estimated; actual sq. ft./acreage/dimensions will differ. Garage/bay sizes may vary from home to home and may not accommodate all vehicles. This is not an offer in states where prior registration is required. Void where prohibited by law. Copyright © 2020 Lennar Corporation, Lennar, the Lennar logo, WCI, the WCI logo, Everything's Included and the Everything's Included logo are U.S. registered service marks or service marks of Lennar Corporation and/or its subsidiaries. LENNAR HOMES LLC CBC038894 and CGC1523282. LENNAR REALTY INC (CQ1013633) 01/20.



MARIA

3 Bedrooms | 3 Baths | Den | 2-Car Garage



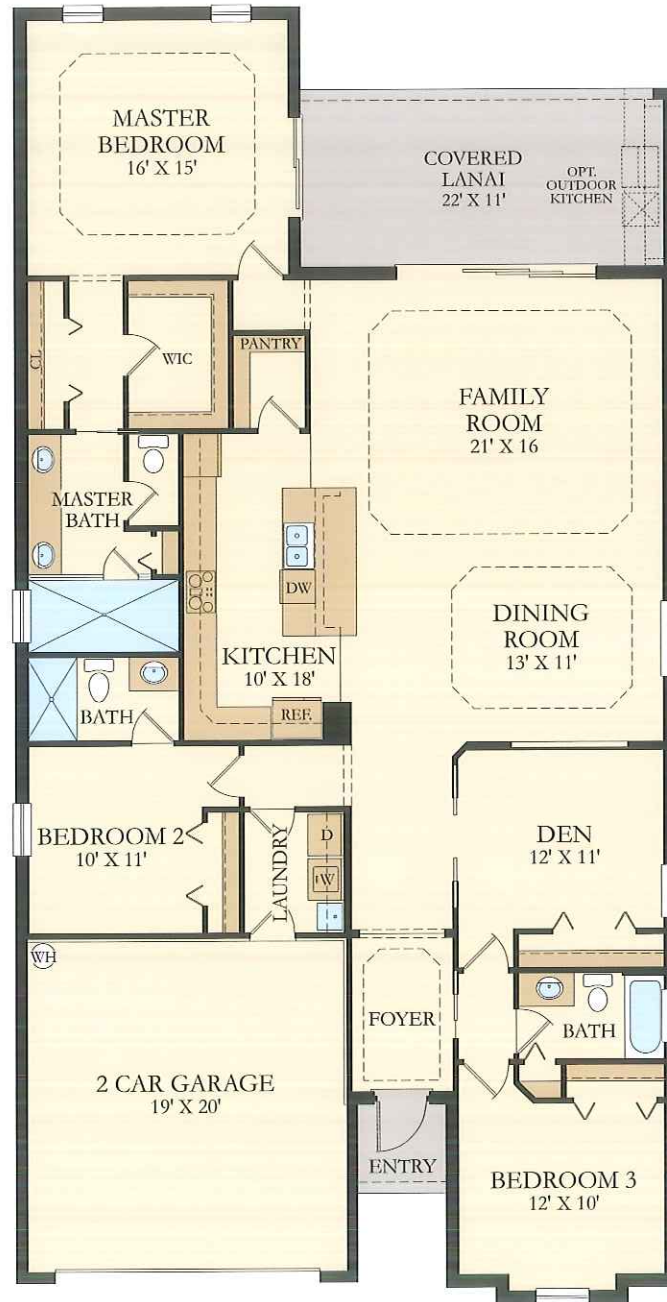
ELEVATION D



ELEVATION E

MARIA

3 Bedrooms | 3 Baths | Den | 2-Car Garage



2,247 Sq. Ft. Living A/C
 28 Sq. Ft. Entry
 242 Sq. Ft. Lanai
 420 Sq. Ft. Garage

2,937 Sq. Ft. Total

LENNAR®



THE NATIONAL
 GOLF & COUNTRY CLUB
 AT AVE MARIA, FLORIDA

Please see your New Home Consultant and/or home purchase agreement for actual features designated as an Everything's Included feature. Features, amenities, floor plans, elevations, and designs vary and are subject to changes or substitution without notice. Items shown are artist's renderings and may contain options that are not standard on all models or not included in the purchase price. Availability may vary. Sq. ft./acreage/dimensions is estimated; actual sq. ft./acreage/dimensions will differ. Garage/bay sizes may vary from home to home and may not accommodate all vehicles. This is not an offer in states where prior registration is required. Void where prohibited by law. Copyright © 2020 Lennar Corporation, Lennar, the Lennar logo, WCI, the WCI logo, Everything's Included and the Everything's Included logo are U.S. registered service marks or service marks of Lennar Corporation and/or its subsidiaries. LENNAR HOMES LLC CBC038894 and CGC1523282. LENNAR REALTY INC (CQ1013633) 01/20.



INCLUDED HOME FEATURES

Luxury Executive

CONSTRUCTION FEATURES

- Steel reinforced concrete block construction
- Concrete and block have green additives in the mixture
- Professionally engineered roof trusses with hurricane tie-downs for wind protection
- Steel-frame interior wall construction
- Green termite prevention
- Hose bibs
- Glass front door (per plan)
- Hurricane protection on sliding glass doors and windows

EXTERIOR DESIGN FEATURES

- Sherwin Williams® paint
- Landscape designs are eco-friendly
- Automatic in-ground irrigation system
- Designer exterior lighting
- Screens on all operable windows
- Gutter system (per plan)
- Opener on all garage doors
- Steel reinforced garage door
- Garage door keypad for easy access
- Fully landscaped and improved homesite
- Concrete roof tile
- Brick paver driveway and entryway
- Brick paver lanai
- Epoxy garage floor finish
- Aluminum screen construction

INTERIOR DESIGN FEATURES

- 1/2" inch interior drywall
- Sherwin Williams® low volatile organic compounds (VOC) interior paint
- Washer and dryer
- Solid surface window sills
- 2" designer window blinds
- Low volatile organic compounds (VOC) carpet
- HVAC system customized to plan and homesite (right size for heating/cooling)
- Raised panel interior doors
- Designer tile in all wet areas
- Vinyl-coated shelving in closet and pantry

ENERGY SAVING FEATURES

- Quick recovery energy-efficient hot water heaters
- Programmable thermostats
- Energy saving insulation in walls and ceiling
- R-4.1 perforated Fi-Foil radiant barrier on exterior walls
- Roof products offer LEED® points

ELECTRICAL APPOINTMENTS

- LED lighting (per plan)
- Smoke and carbon monoxide detectors throughout home
- Cable outlets in all bedrooms, den and family room
- Lighting in all walk-in closets
- One hot electrical outlet with switch in all bedrooms
- Pre-wired for fan or light fixture in all bedrooms, den and living room
- Wi-Fi CERTIFIED™ Home - See brochure for additional features
- Electric automobile charging port in garage

LUXURY KITCHEN FEATURES

- In-sink food disposal system
- Designer faucet
- Stainless steel undermount kitchen sink
- Designer cabinet hardware
- Complete GE® stainless steel appliance package including:
 - Dishwasher
 - Built-in wall oven and microwave
 - Smooth cooktop
 - Side-by-side refrigerator
- 4" counter backsplash
- Granite countertops
- Pull-out trash can
- Pull-out cabinet shelves
- Under cabinet lighting

ELEGANT BATHROOM FEATURES

- Elongated commodes in all water closets
- Designer shower wall tile
- Clear glass enclosure in master bath
- Designer plumbing fixtures and accessories
- Designer lighting in all bathrooms
- Faucets and showerheads certified to meet EPA WaterSense® criteria
- Backsplash on all bathroom countertops
- Tile shower floor (per plan)
- Granite vanity tops

LENNAR®

Everything's Included®, and every room's connected.

